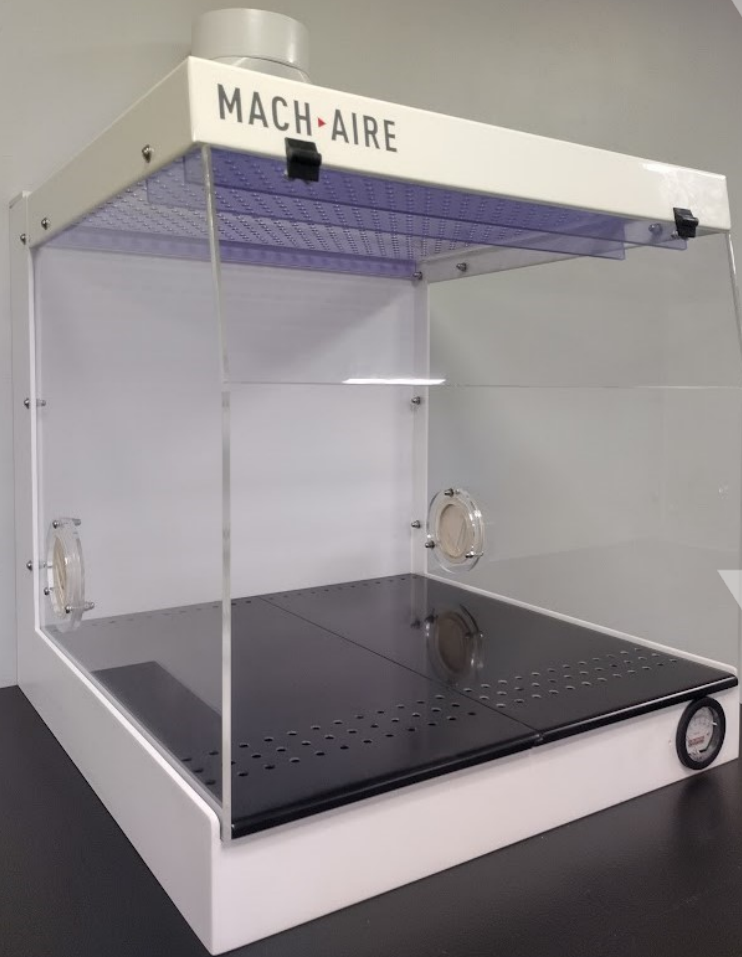


VENTILATED WEIGH STATION



For the safe weighing out of powders and liquids under a controlled, low turbulent environment. The unit is available in three standard widths of 600mm, 900mm and 1200mm

CONTAINMENT TESTED

Test methods BS7258 and Invent SafeCheck

- Excellent containment both under static and dynamic disturbance test conditions
- Containment better than 0.001ppm with 3 l/m 10% SF₆
- Operator protection better than 10⁵ with 3 l/m 10% SF₆

FEATURES

- Low flow rate
- High operator protection
- Pressure gauge for continuous flow monitoring
- Pass through port for power cable
- Hinged front access panel

DIMENSIONS

Enclosure

- Width 575mm/ 875mm/ 1175mm
- Depth 600mm

Working Aperture

- Width 575mm/ 875mm/1175mm
- Height 300mm

Footprint

- Width 600mm/ 900mm/ 1200mm
- Depth 675mm

TECHNICAL SPECIFICATION

Taking the lead from our major clients GlaxoSmithKline, AstraZeneca and Pfizer, Mach-Aire produced a purpose built enclosure to ensure the safe weighing of materials.

The enclosures are easy to install and can be coupled to any single extract or recirculatory system. Single and double balance units are available as standard, but special purpose units can be designed to suit individual requirements.

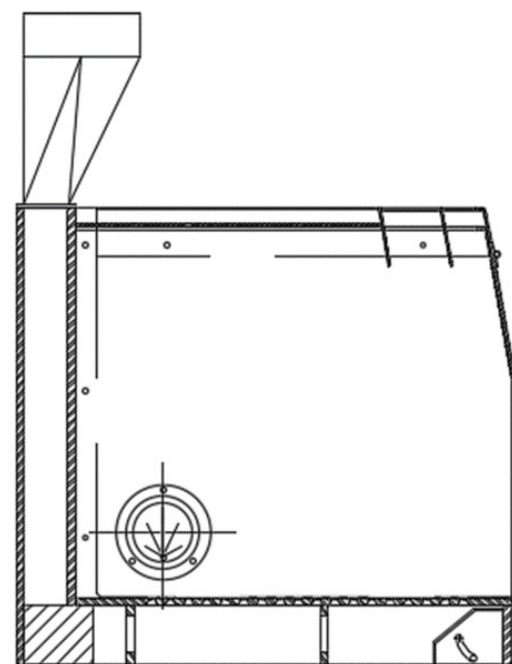
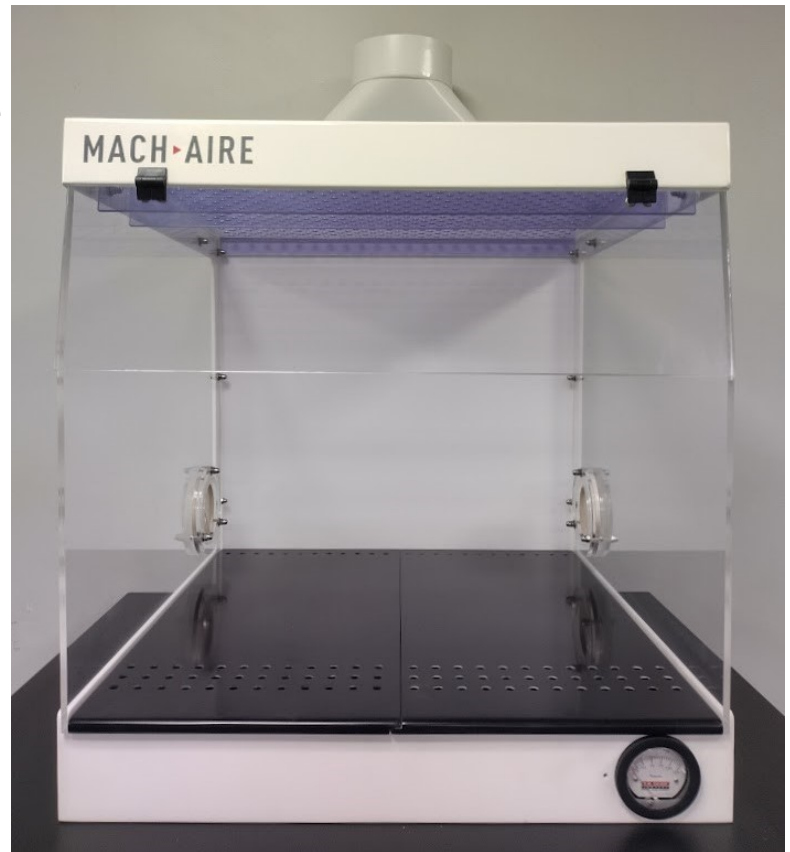
The weigh station would be of our standard ventilated plenum base type suitable for connection to a single or multi point extraction system constructed to the following specification. The unit is available in three standard widths of 600mm, 900mm and 1200mm.

BASE UNIT

The main body section is fabricated from 6mm and 12mm thick white rigid acrylic resin cast sheet materials to form a base containment and work level support unit with integral rear void/duct area. All joints would be fully bonded utilising a colour matched pigmented polyester resin grout. All exposed surfaces would be polished to a smooth matt/semi gloss finish.

WORK TOP

The work level is fabricated from 12mm thick Nocturne Black Corian sheet material. The leading top edge is radiused for comfort whilst working at the station. The top would be machine drilled around a central—undrilled—platform area to allow air to be drawn into the extract plenum below. For ease of cleaning the top would be of the slide off type thus allowing any powder/liquid accidentally spilt to be cleaned from the containment sump below.



SIDE PANELS AND VISOR

The sides of the unit would be enclosed by the installation of 6mm thick clear Perspex panels bonded to the base unit by silicone joints. The front working aperture would be restricted to 300mm opening height by the installation of a top hung hinged 6mm thick Perspex clear panel. All hinges would be of black nylon/polyester construction.



TOP CLOSURE PLATE

Mounted within the aerofoil section parallel to the work surface is a clear PVC closure plate machine drilled and designed to allow minimal downflow air to reduce turbulence around the weigh scales/balance.

AEROFOIL

An aluminium powder coated aerofoil section would be fitted around the top edge of the unit bonded to the side glass panels by silicone. The front Perspex panel would be secured by hinges to the aerofoil.

PASS THROUGH PORTS

Pass through ports for the passage of plugs/cables are positioned at the rear of the side-wall within the base unit. The pass through comprises of a star cut neoprene disc and a machined Perspex clamping ring secured in position by a dome head stainless steel set screws.

AIRFLOW INDICATION

Fitted within the front face of the base unit is a minihelix gauge to provide constant monitoring of the extract air pressure without the need for electronic systems. To ensure correct operation the minihelix should indicate a pressure of 75Pa with the recommended extraction rate of $0.056\text{m}^3/\text{sec}$.

SUPPORT FRAME

The unit can be supplied complete with a rolled hollow section mild steel support frame to suit either seating or standing use. The frame would be of welded construction and finished with a baked polyester powder coating. To enable site levelling the base would incorporate four adjustable height feet.





EXTRACT VOLUME REQUIREMENTS

To ensure correct performance and containment we recommend an extraction rate of $0.056\text{m}^3/\text{sec}$ for a 600mm wide unit with proportionate increases for larger units.

DUCT CONNECTION

The base unit would be fitted with a 'fish tail' connection to the top rear void area. The duct connections would be fabricated throughout from PVC materials and sized to suit the required volume flowrate

ADDITIONAL INFORMATION

More detailed information regarding this range is available, should it be required. A full operation and maintenance manual is provided with all units on completion of installation.

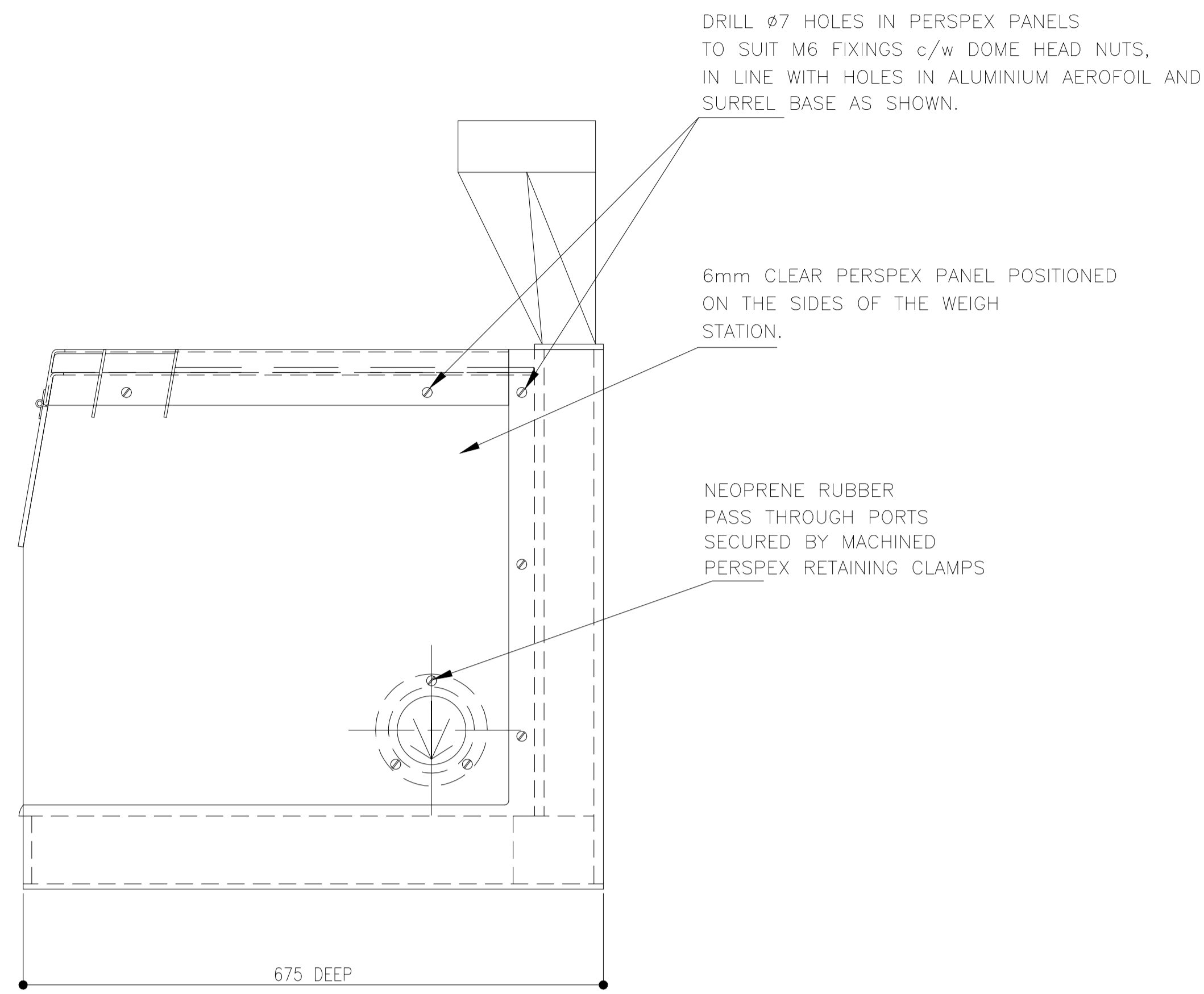


INNOVAIRTION®

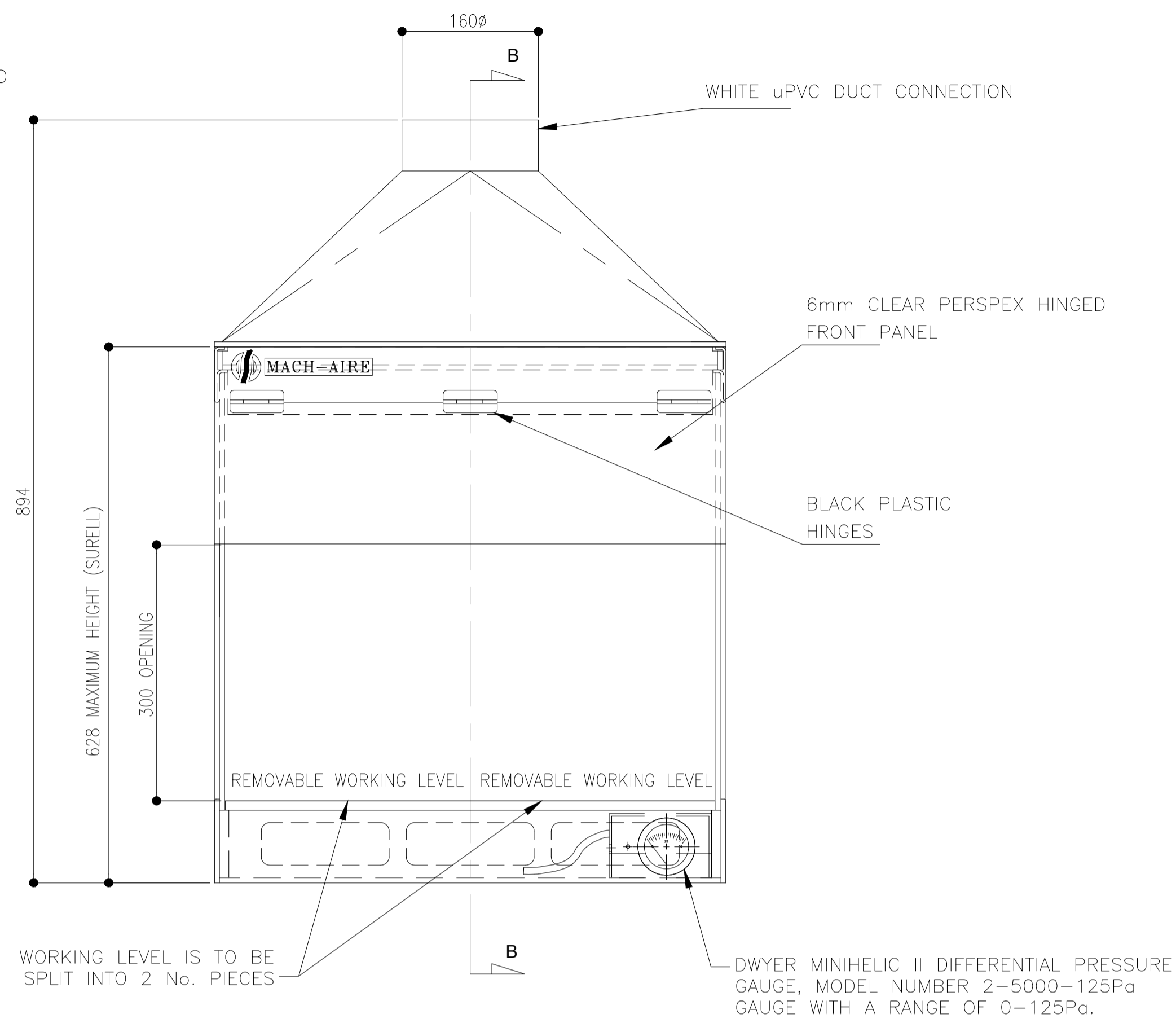
Mach-Aire Limited
Bridge Street
Horwich
Bolton BL6 7BT

Tel: +44 (0) 1204 668905
Fax: +44 (0) 1204 668906
e-mail: sales@machaire.co.uk
www.machaire.co.uk

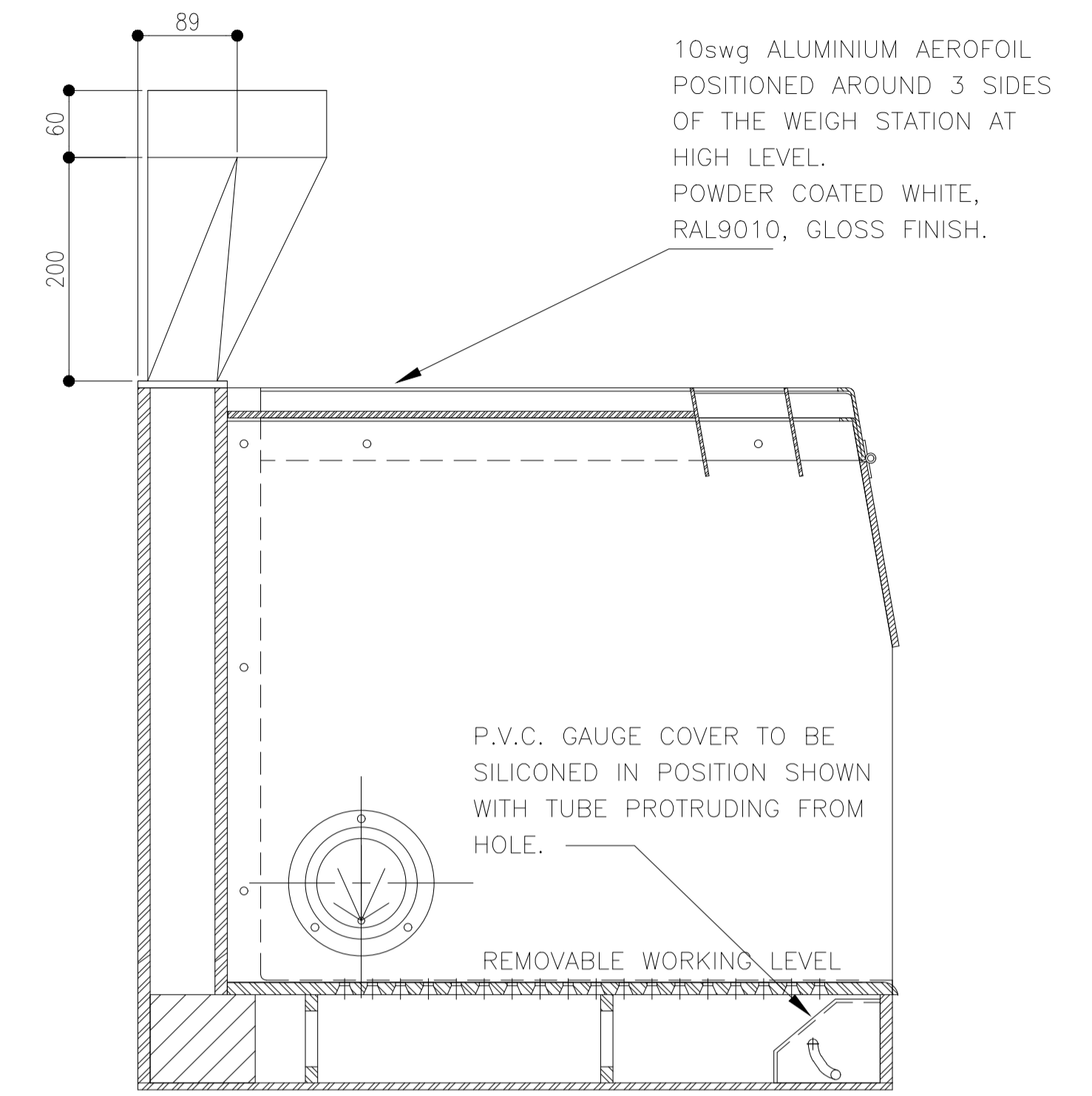
Registered in Scotland 57500 VAT Registered 592 9715 90



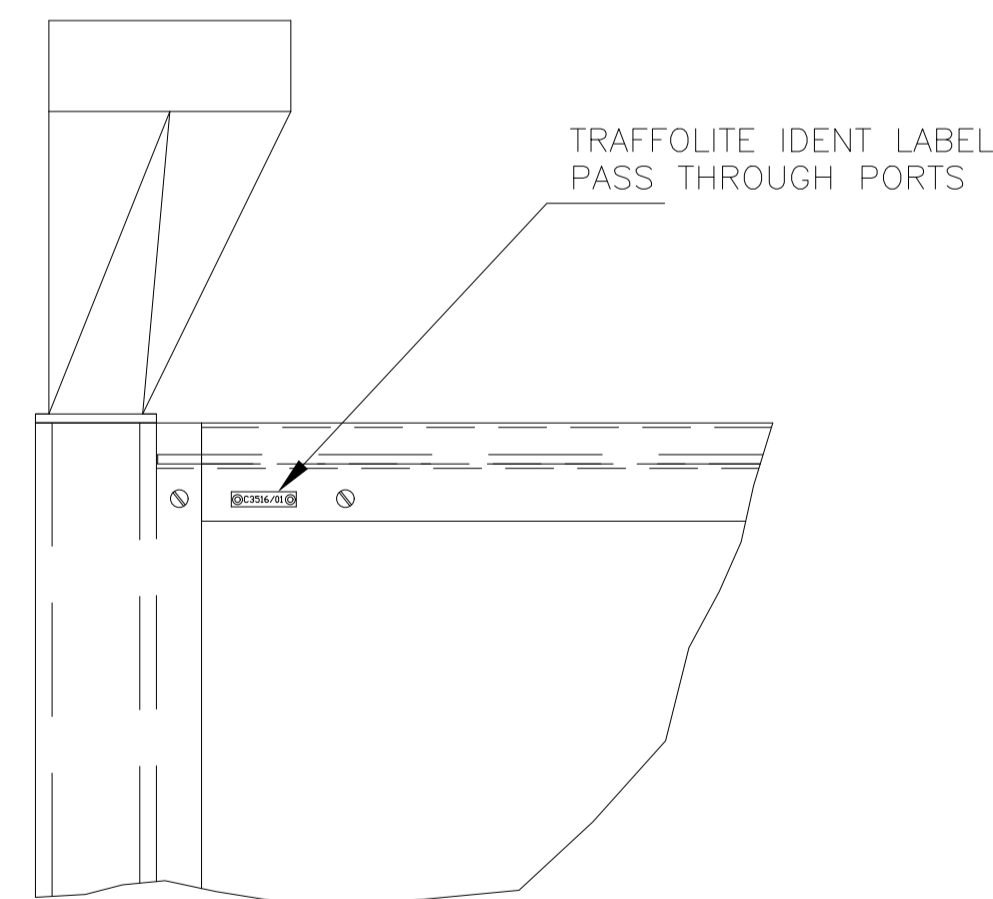
RIGHT HAND ELEVATION



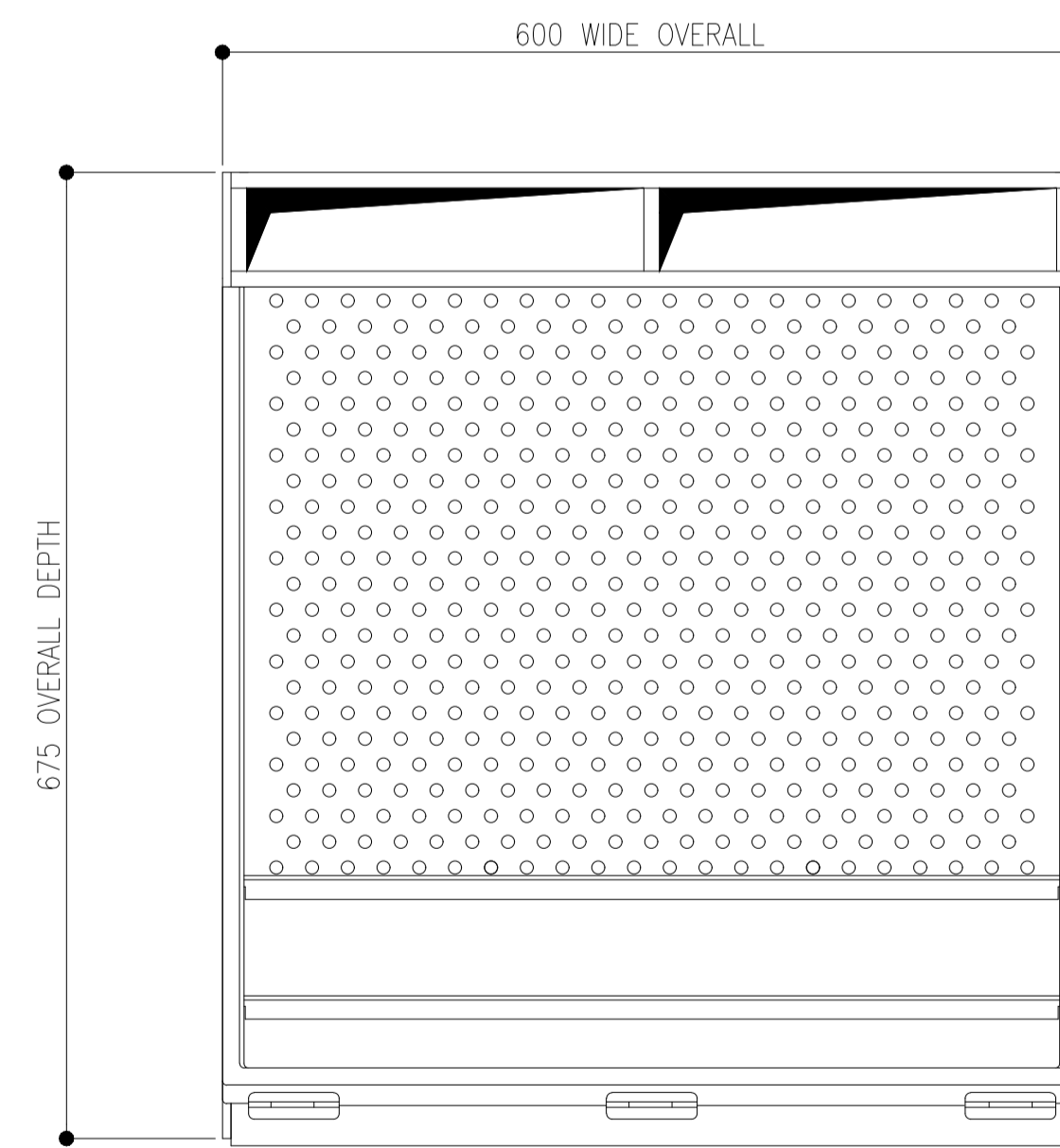
FRONT ELEVATION



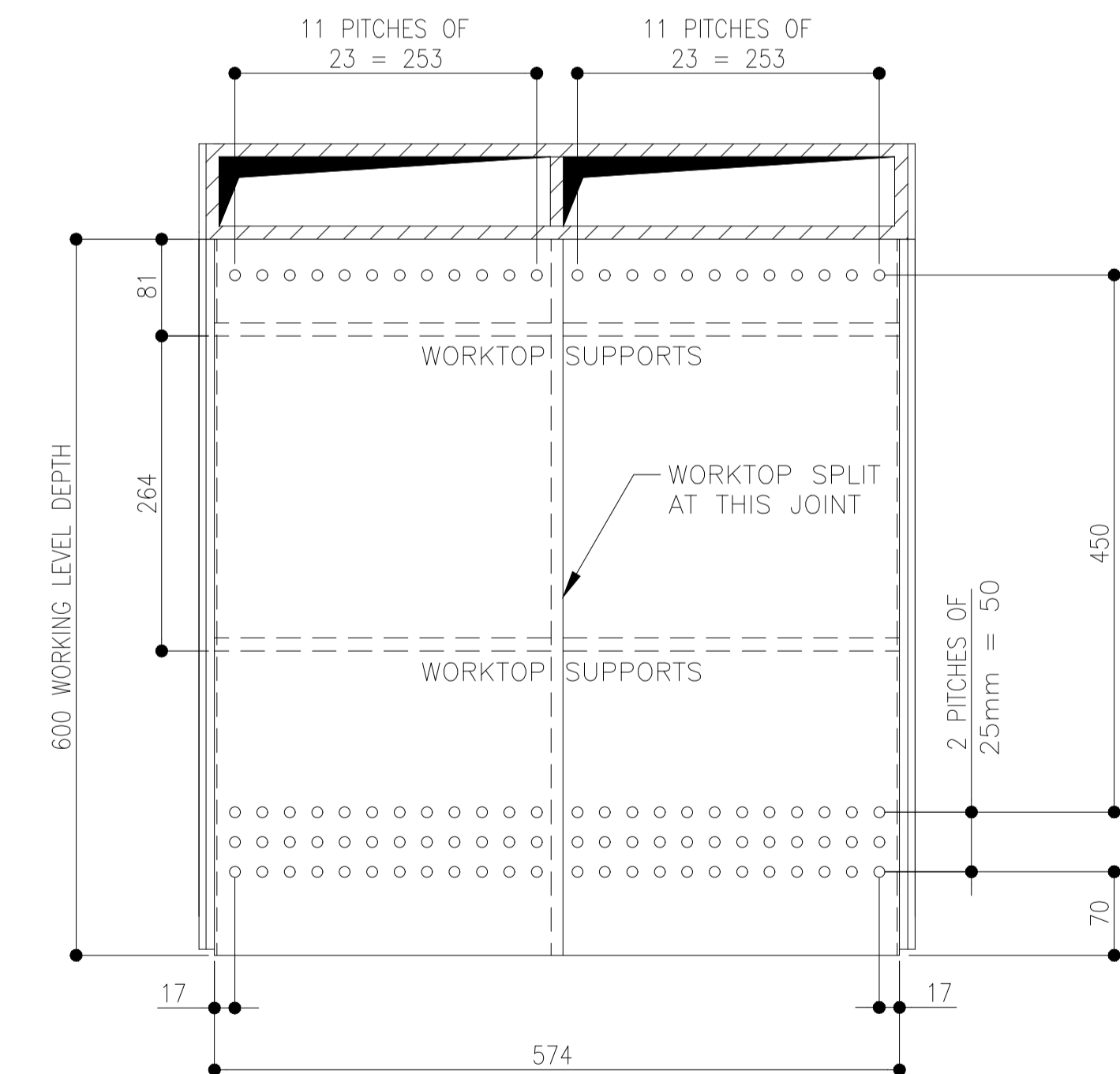
PART SECTION ON 'B-B'



PART VIEW ON LH ELEVATION



PLAN ELEVATION (WITH DUCT CONNECTION REMOVED)



VIEW ON WORKING LEVEL

RECOMMENDED EXTRACT VOLUME = 0.056m³/sec

No	DESCRIPTION	CHEK'D	APPROV	DATE

THIS DRAWING IS COPYRIGHT AND IS THE PROPERTY OF MACH-AIRE LIMITED. IT MAY NOT BE COPIED, REPRODUCED OR USED WHOLLY OR IN PART IN ANY WAY WITHOUT THE WRITTEN PERMISSION OF MACH-AIRE LIMITED OTHER THAN FOR THE SPECIFIC PURPOSES FOR WHICH IT IS ISSUED BY MACH-AIRE LIMITED.

CLIENT

PROJECT

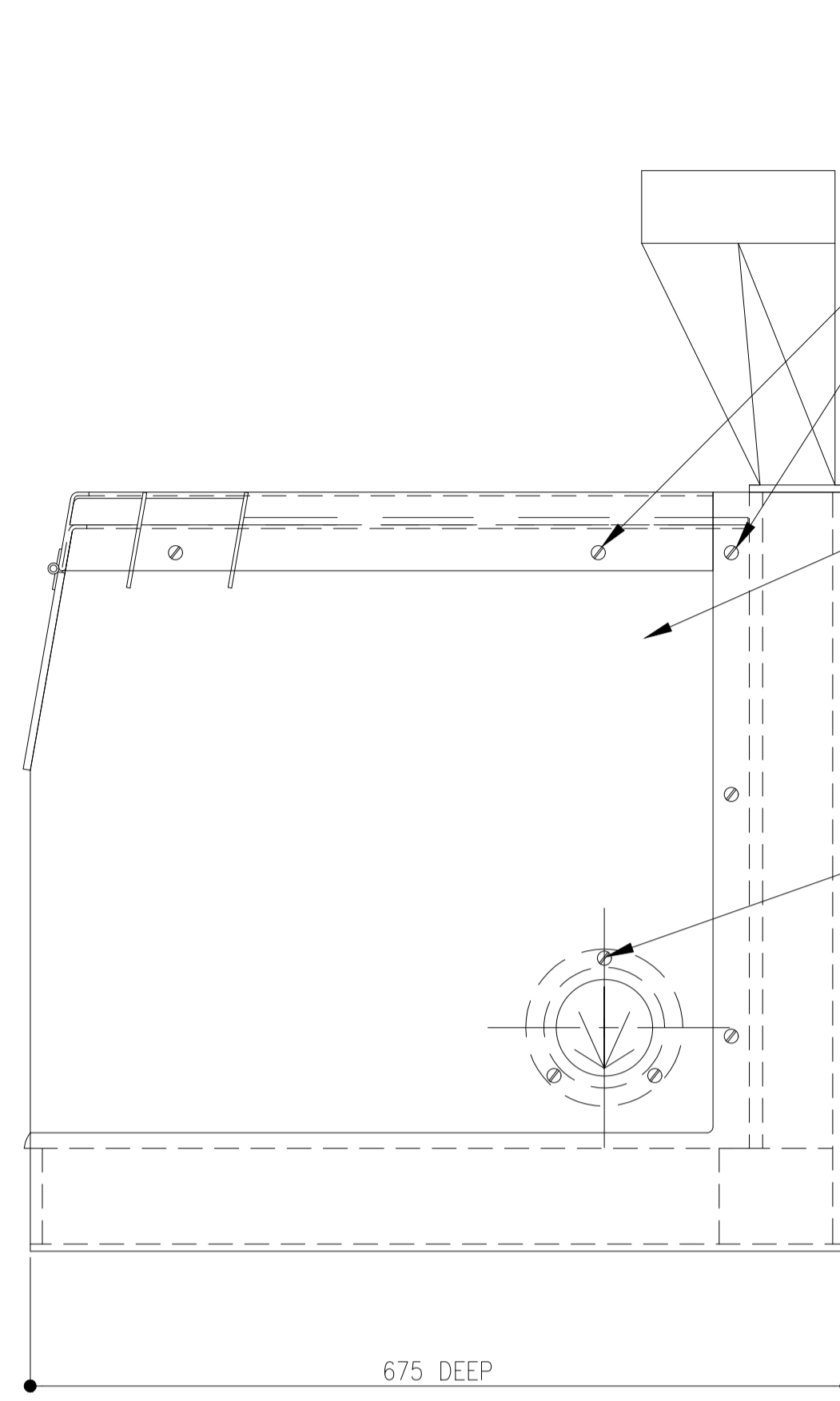
TITLE

GENERAL ARRANGEMENT
STANDARD 600mm WEIGH STATION

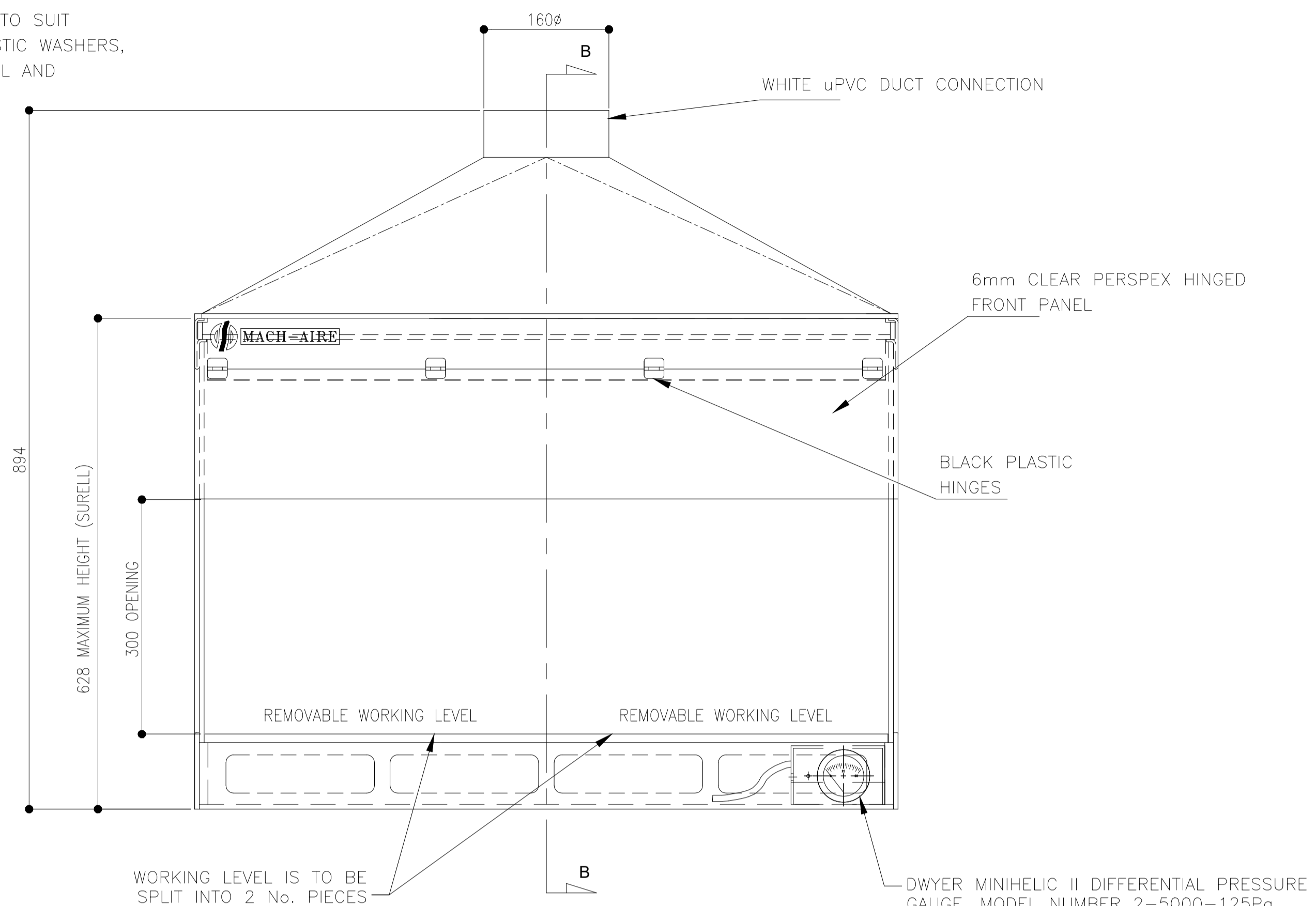


MACH-AIRE LTD
Fume Cupboards & Extraction Systems
BRIDGE STREET HORNWICH BOLTON BL6 7BT TEL : 01204 668905
FAX : 01204 668906
Registered Office : 16 Hill Street, Edinburgh, Scotland .

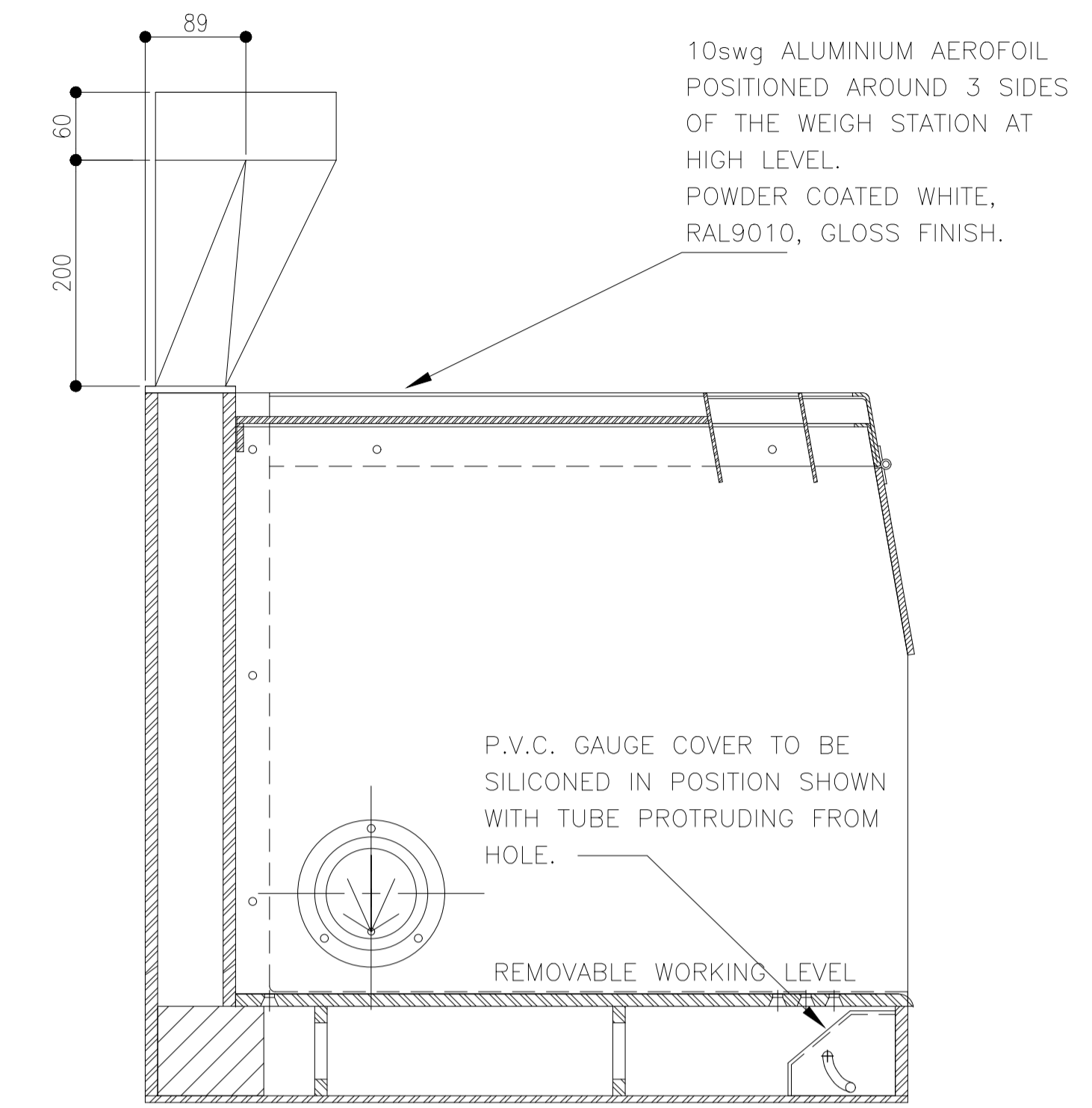
Date	MAY 03	Scale	1:5
Drawn	A.S.	Traced	
Checked	S.S.	Approved	
Drawing No.	WS06_00	Rev	



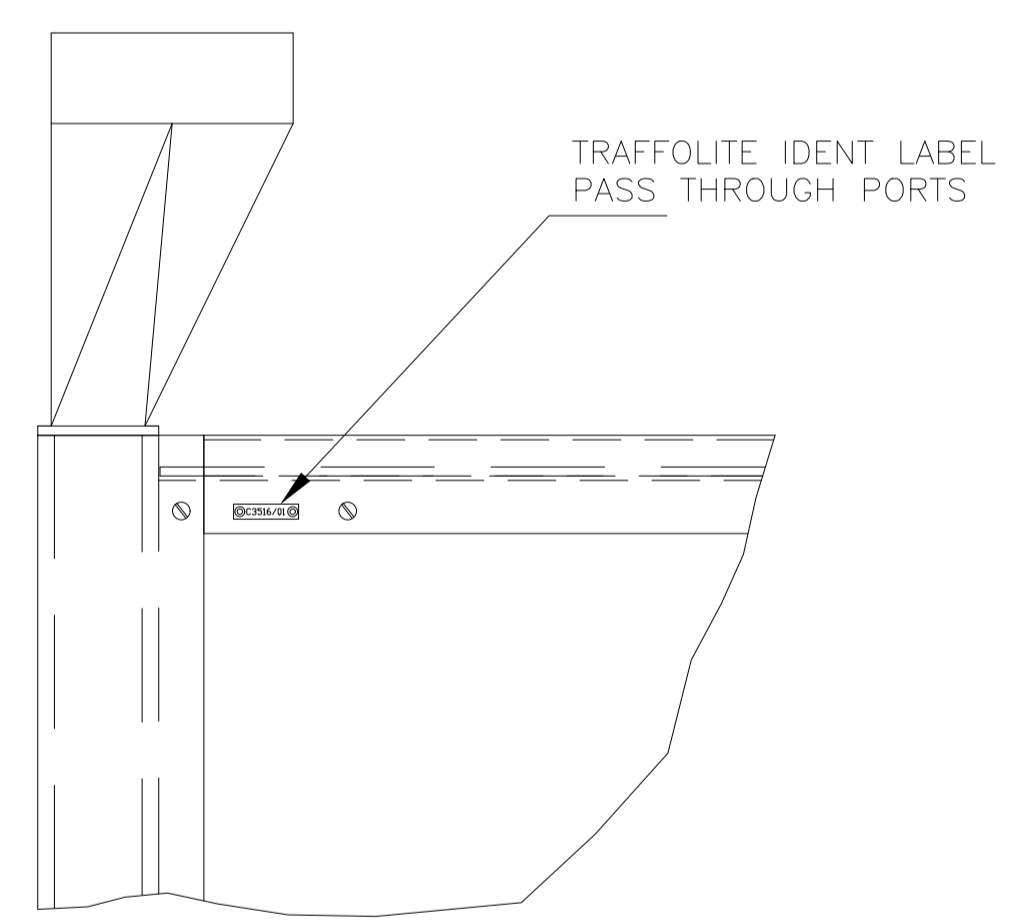
RIGHT HAND ELEVATION



FRONT ELEVATION

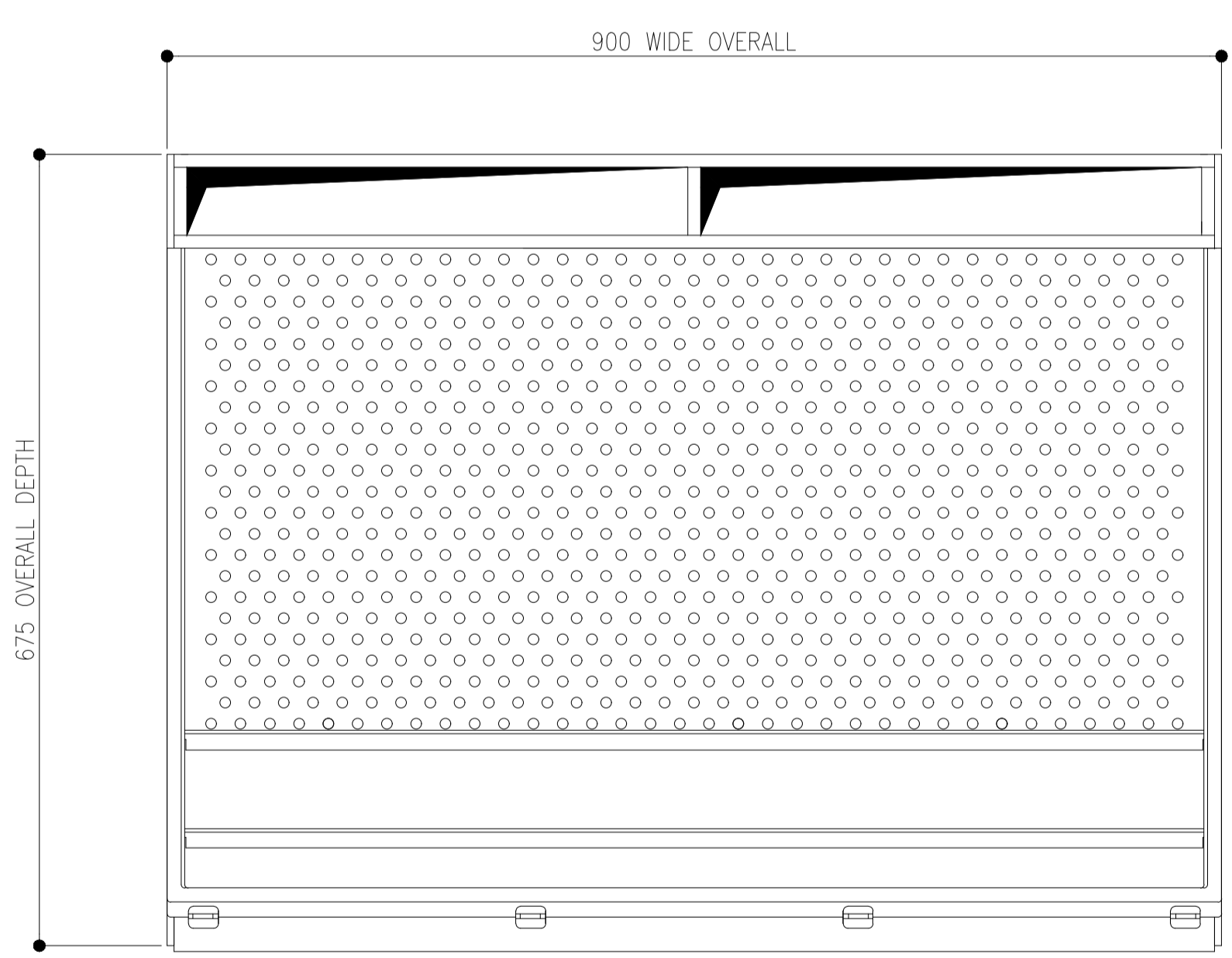


PART SECTION ON 'B-B'

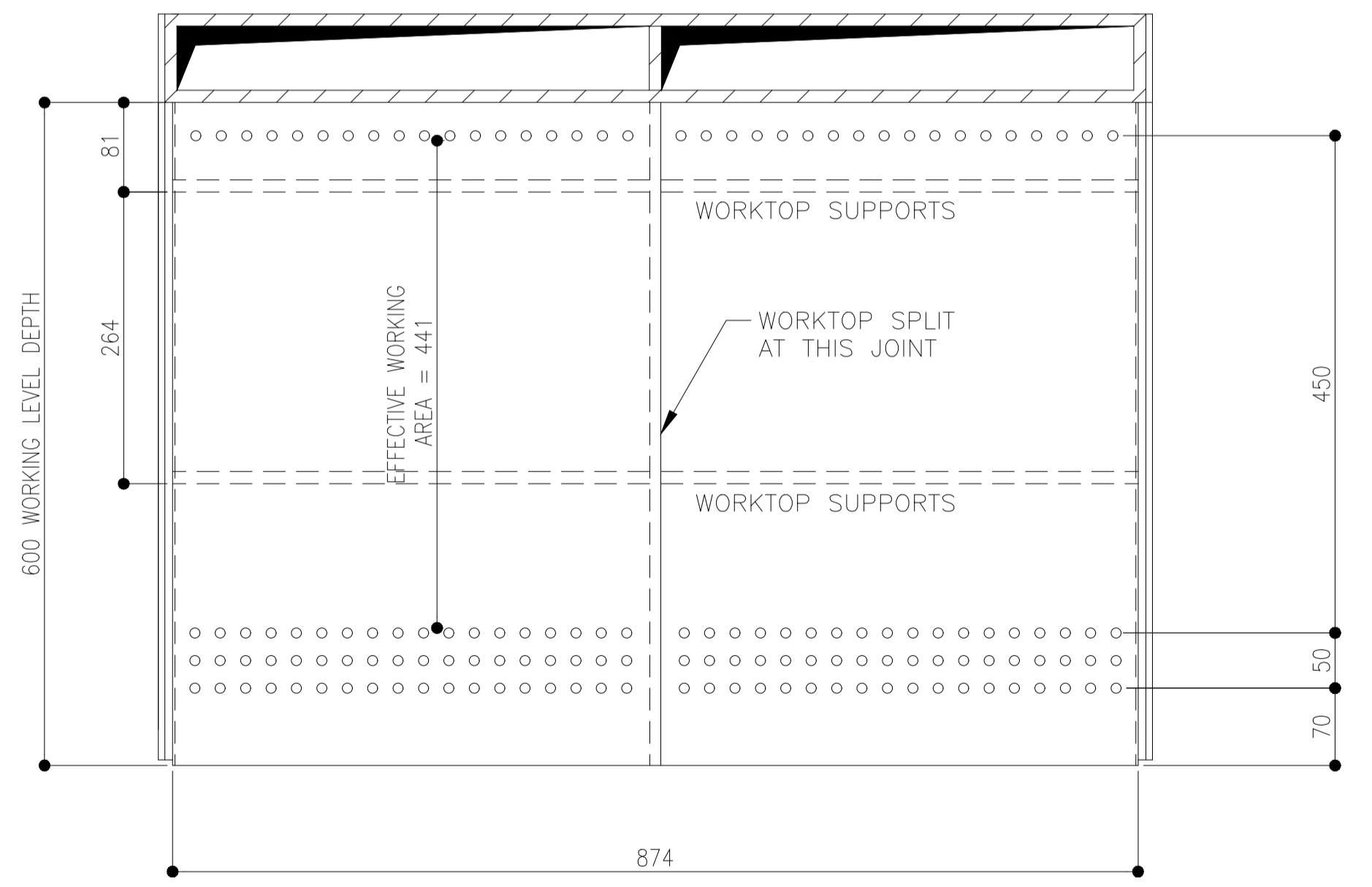


PART VIEW ON LH ELEVATION

NOTE:- DOCUMENT HOLDER TO BE SUPPLIED LOOSE FOR CLIENT FITTING.



PLAN ELEVATION (WITH DUCT CONNECTION REMOVED)



VIEW ON WORKING LEVEL

RECOMMENDED EXTRACT VOLUME = 0.084m³/sec

REVISIONS	No	DESCRIPTION	CHEK'D	APPROV	DATE
A	DOCUMENT HOLDER ADDED				29/07/05

THIS DRAWING IS COPYRIGHT AND IS THE PROPERTY OF MACH-AIRE LIMITED. IT MAY NOT BE COPIED, REPRODUCED OR USED WHOLLY OR IN PART IN ANY WAY WITHOUT THE WRITTEN PERMISSION OF MACH-AIRE LIMITED OTHER THAN FOR THE SPECIFIC PURPOSES FOR WHICH IT IS ISSUED BY MACH-AIRE LIMITED.

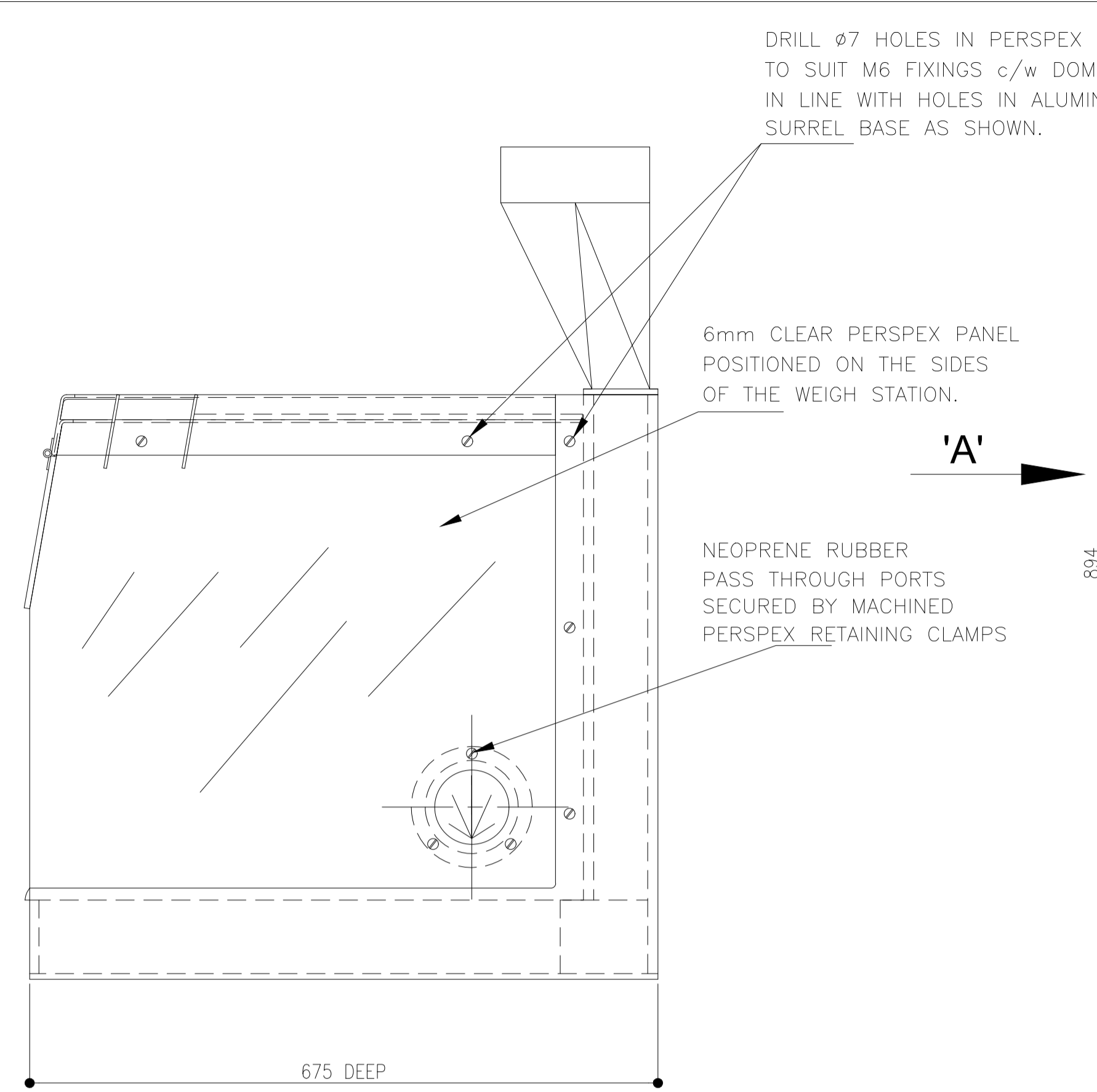
CLIENT

PROJECT

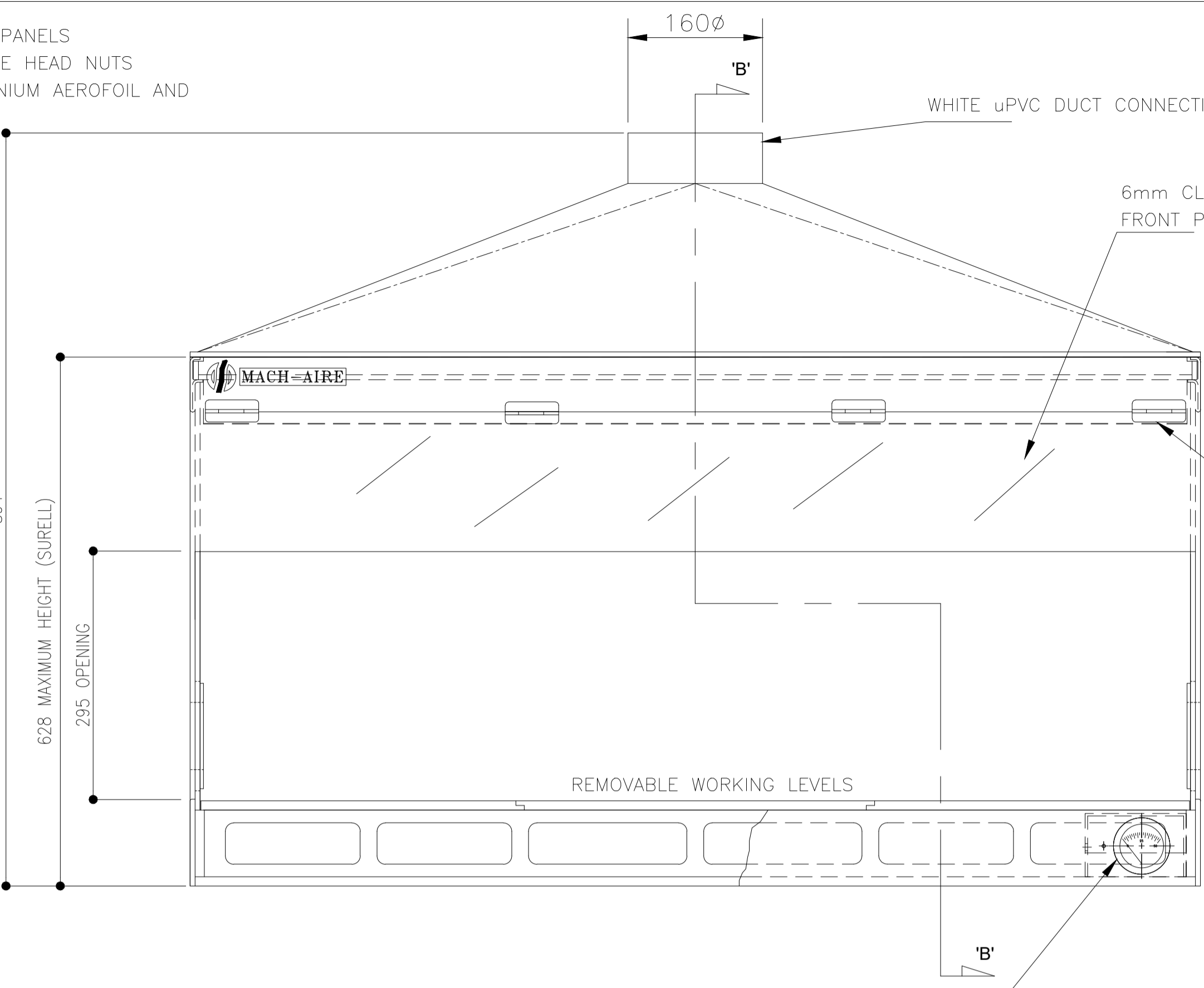
TITLE
GENERAL ARRANGEMENT
STANDARD 900mm WEIGH STATION

MACH-AIRE LTD
Fume Cupboards & Extraction Systems
BRIDGE STREET HORWICH BOLTON BL6 7BT TEL : 01204 668905
FAX : 01204 668906
Registered Office : 16 Hill Street, Edinburgh, Scotland

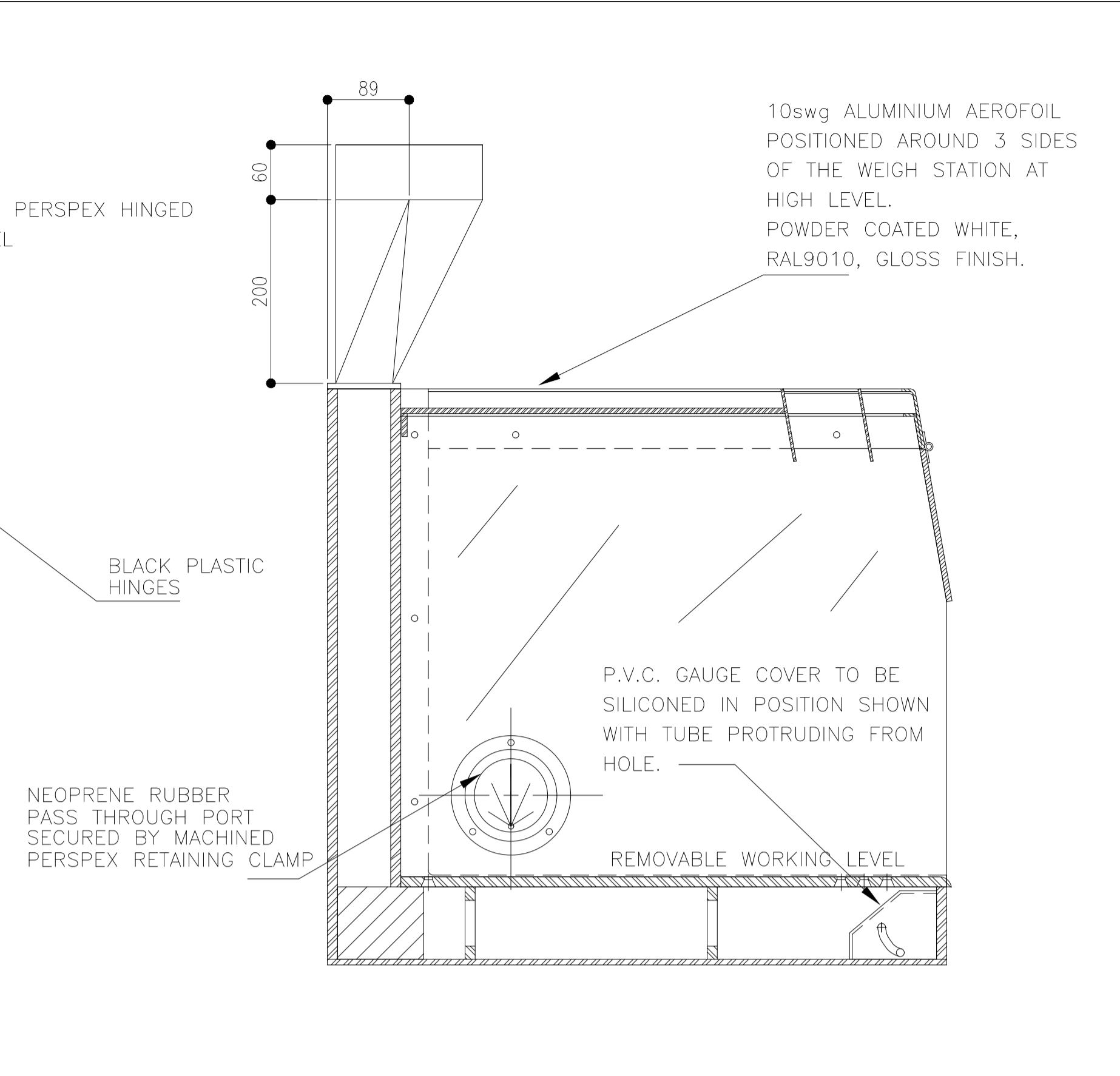
Date	JUL '03	Scale	1:5
Drawn	SS	Traced	
Checked		Approved	
Drawing No.	WS09_00	Rev	A



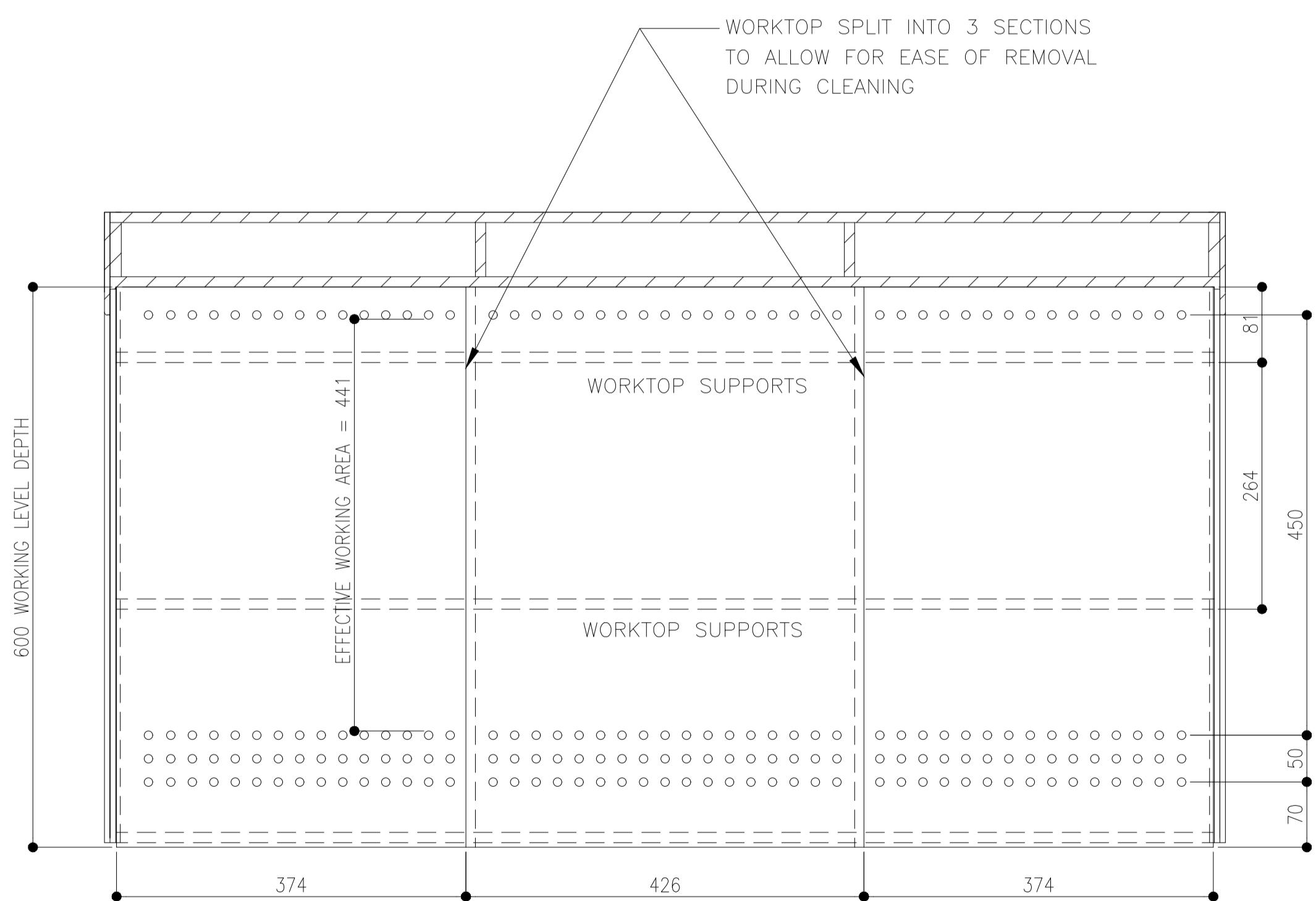
RIGHT HAND ELEVATION



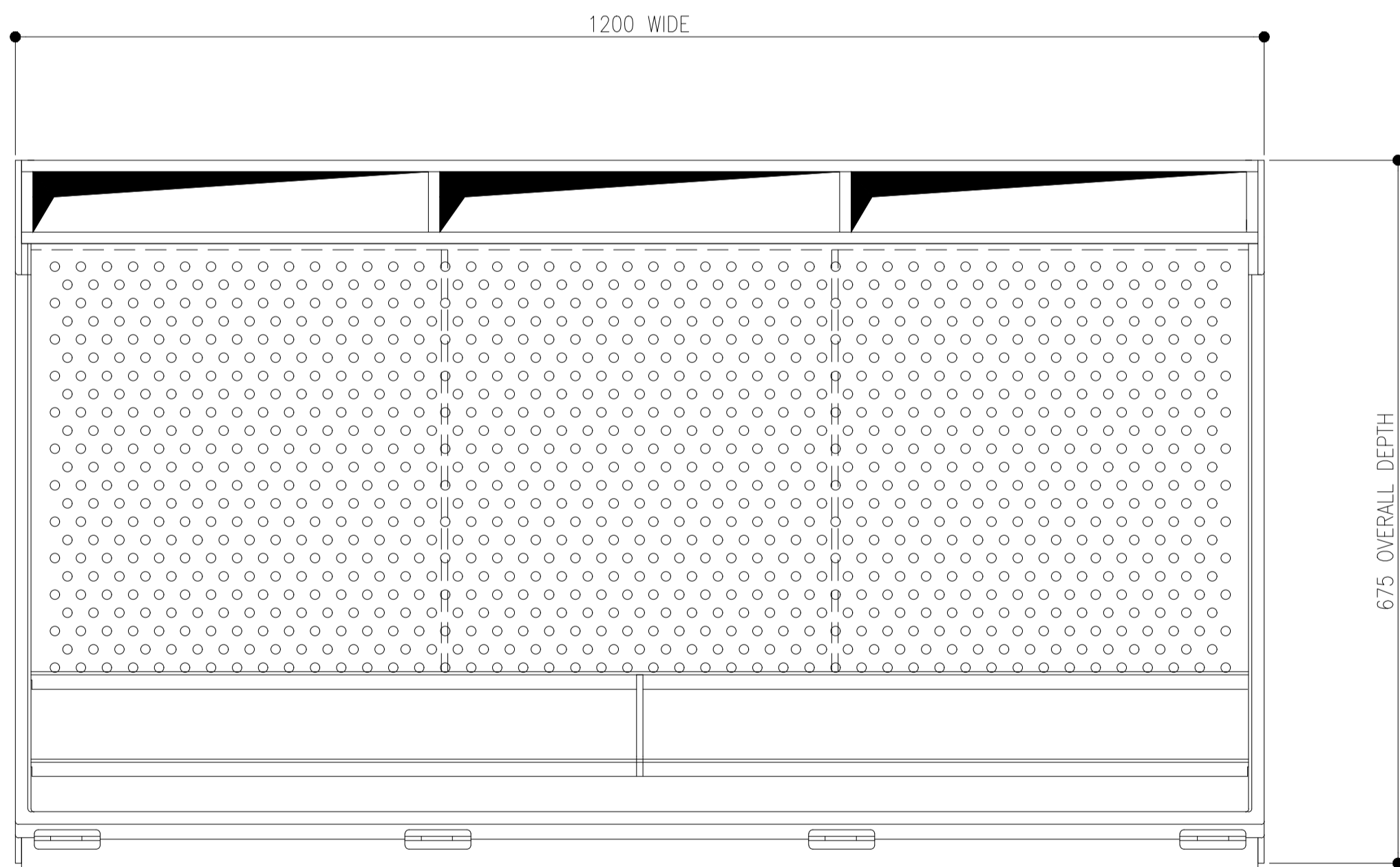
FRONT ELEVATION



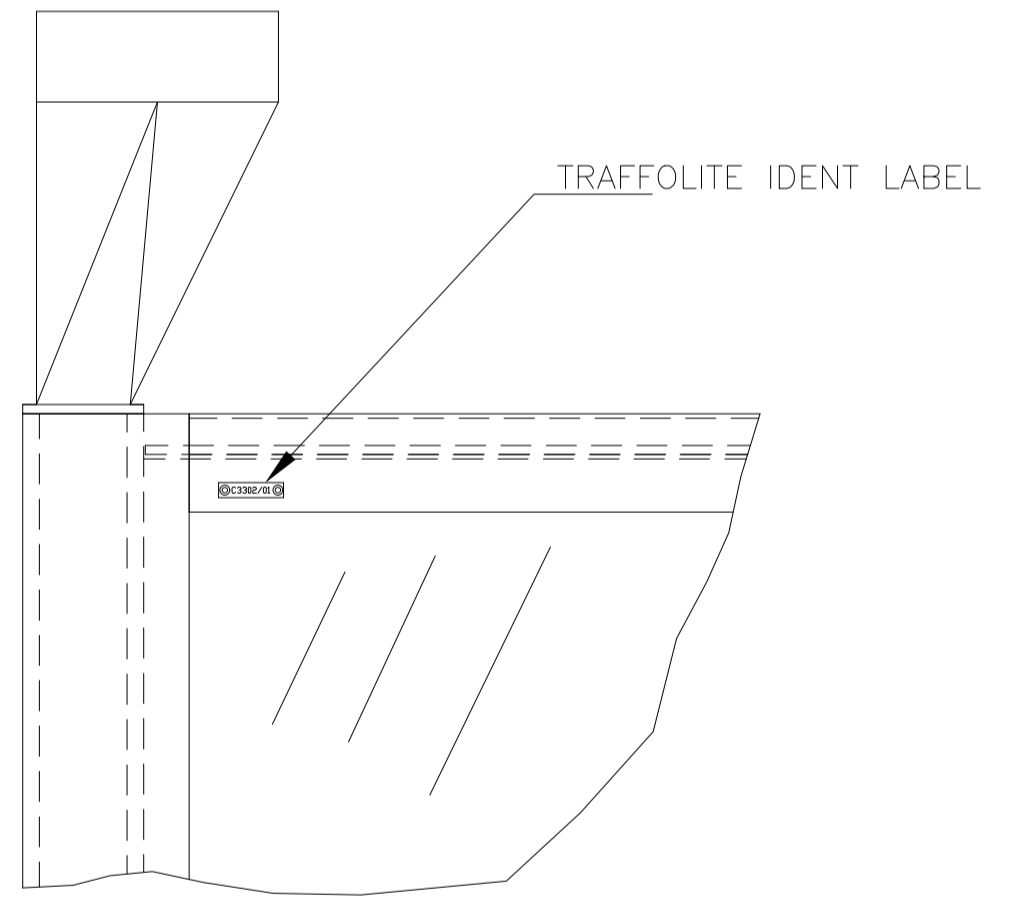
PART SECTION ON 'B-B'



SECTION ON WORKING LEVEL



PLAN ELEVATION (WITH DUCT CONNECTION REMOVED)



PART VIEW ON ARROW 'A'

NOTE:- DOCUMENT HOLDER TO BE SUPPLIED LOOSE FOR CLIENT FITTING.

RECOMMENDED EXTRACT VOLUME = 0.112m³/sec

REVISIONS	DESCRIPTION	CHEK'D	APPROV	DATE
A	DOCUMENT HOLDER ADDED			12/08/05

THIS DRAWING IS COPYRIGHT AND IS THE PROPERTY OF MACH-AIRE LIMITED. IT MAY NOT BE COPIED, REPRODUCED OR USED WHOLLY OR IN PART IN ANY WAY WITHOUT THE WRITTEN PERMISSION OF MACH-AIRE LIMITED OTHER THAN FOR THE SPECIFIC PURPOSES FOR WHICH IT IS ISSUED BY MACH-AIRE LIMITED.

CLIENT

PROJECT

TITLE

GENERAL ARRANGEMENT
STANDARD 1200mm WEIGH STATION

MACH-AIRE LTD
Fume Cupboards & Extraction Systems
BRIDGE STREET HORNWICH BOLTON BL6 7BT TEL : 01204 668905
FAX : 01204 668906
Registered Office : 16 Hill Street, Edinburgh, Scotland .

Date	JUL 03	Scale	1:5
Drawn	A.S.	Traced	
Checked	S.S.	Approved	
Drawing No.	WS12_00	Rev	A